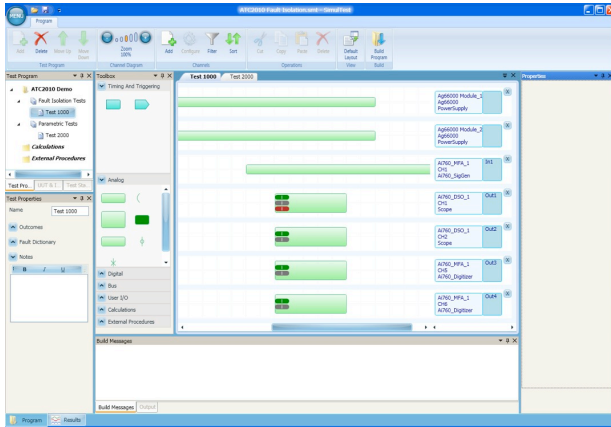


PIDESO® SIMULTEST®

The New Standard for Automated Testing

Innovative Solutions for Automated Testing

SimulTest® is designed to streamline the creation of complex Test Program Sets (TPSs) and to executed those TPSs efficiently, aligning stimuli and acquisition in a coherent time domain.



SimulTest® features a unique approach for workflow editing such that the TPS engineer is able to create complex multi-step TPSs respecting time domain constructs and then execute those test steps so that the instrument instructions are controlled in a coherent time domain. This approach provides a graphical results display containing multiple stimuli and acquisition data points coherently aligned making it easy to visualize test results and diagnose UUT problems.

SimulTest® uses a fault isolation matrix that improves the outcome and PCOF call-out determination for tests and test groups, especially for tests containing multiple acquisition data points.

SimulTest® reduces time-to-market for test development and reduces total test execution time. Time-to-market is achieved through the simple drag-and-drop workflow editor making it possible for technicians to rapidly create even the most complex TPS with ease and without in-depth knowledge of the low-level instrument driver functions. Total test execution time is optimized through the parallelization and time domain alignment of multiple stimuli and acquisitions.

SimulTest® is flexible and is easily adapted to work with most industry available instruments.



- ★ Drag-and-Drop TPS Design
- ★ Graphical Results Display
- ★ Coherent Parallel Testing
- ★ Failure Isolation Matrix
- ★ Significant Reduction of Test Run Times
- ★ Improved Diagnostic Accuracy

Drop-In Instrument Examples

Agilent

- N67xx DC Power Supplies
- 661xx DC Power Supplies

Ametek

- AC & DC Power 2253i Series

Huntron

- Dual-Head Prober w/Chassis

Marvin Test Solutions

- GTX2000 Series Universal Time Interval Timer
- GX2065 Digital Multimeter/Digitizer
- GX5295 Digital I/O
- GX5964 Digital I/O
- GX6021 1x4 Multiplexer Switching
- Switching Matrix 32x2, 32x4, 32x6

National Instruments

- NI4071 7.5 Digit Flex DMM
- NI5422 Arbitrary Waveform Generator
- NI5451 Arbitrary Waveform Generator
- NI5154 Digitizer
- PXI DC Power Supplies

Teradyne

- Ai-760 Analog Instruments
 - Ai-760 Channel (MFA) Instrument
 - Ai-760 DMM
 - Ai-760 Scope
- Ai-710 Analog Test System
- Bi4 Bus Test Instrument
- Di Series Digital Test Instrument

Generic IVI Compliant

- AC Power Supplies

PIDESO 
Pioneering Decisive Solutions, Inc.

22560 Epic Drive, Suite 100
California, Maryland 20619
www.PIDESO.com